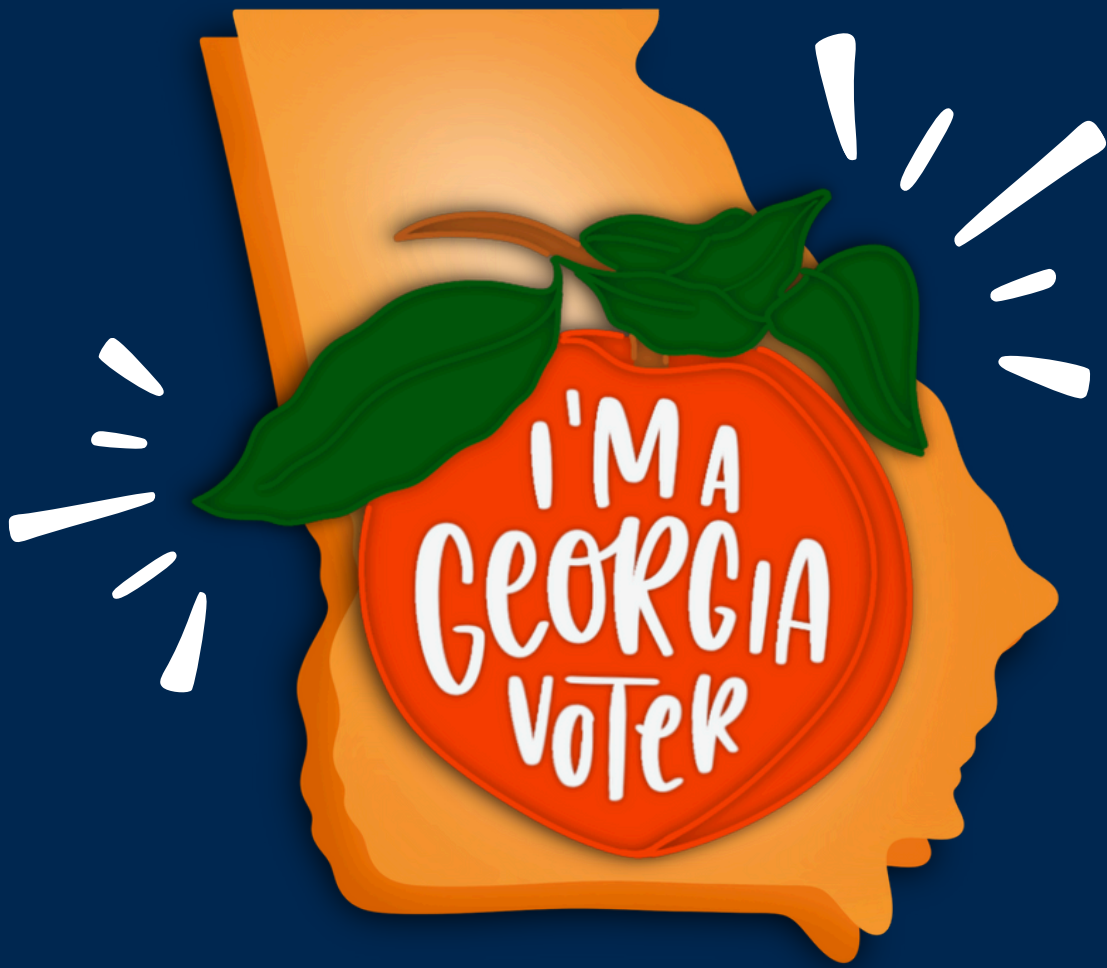
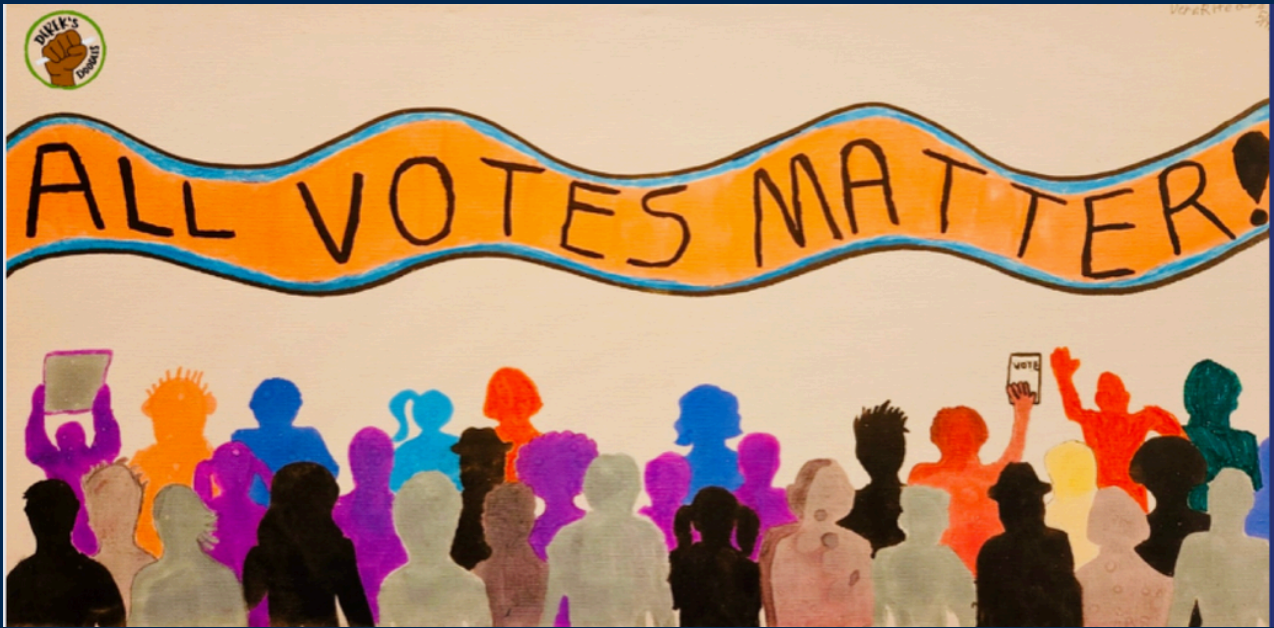


**YOUR VOICE.
YOUR VOTE.**



**A U4C Guide to Preparing for
the 2024 Election**





Uniting for Change created this voting guide to help prepare self-advocates in Georgia to participate in the voting process.

Elected officials work for all of people - including people with disabilities. It is important that elected officials listen to how laws and policies affect self-advocates across the state of Georgia. Voting is one way people with disabilities can use stories, wisdom and experiences to influence laws and policy decisions on local, state and national levels. Uniting for Change encourages all people in Georgia to vote. Make your voice heard!

KEY DATES & DEADLINES

EARLIEST DAY FOR A VOTER TO REQUEST A MAIL ABSENTEE BALLOT	August 19, 2024
VOTER REGISTRATION DEADLINE FOR THE NOVEMBER GENERAL ELECTION	October 7, 2024
DEADLINE TO SUBMIT ABSENTEE BALLOT APPLICATION	October 25, 2024
GENERAL ELECTION EARLY VOTING	October 15 - November 1, 2024
DEADLINE FOR SUBMITTING ABSENTEE BALLOT	7:00 pm on November 5, 2024
GENERAL ELECTION	November 5, 2024

REGISTER TO VOTE

To register to vote you must be:

- A citizen of the United States.
- A legal resident of Georgia and of the county in which you wish to vote.
- At least 17 1/2 years of age to register and 18 to vote.

How can I register to vote?

- Complete the application online or download, print and fill out an application from the Secretary of State's [website](#).
- Contact your county board of registrars or election office, public library, public assistance office, military recruitment office or school for a mail-in voter registration application.
- Utilize "Motor Voter" registration when you renew or apply for your driver's license or identification card at the Department of Driver Services.
- College students can obtain Georgia voter registration applications in any state in the U.S. from their school registrar's office or the office of the Vice President of Academic Affairs.

CAST YOUR BALLOT

Early Voting

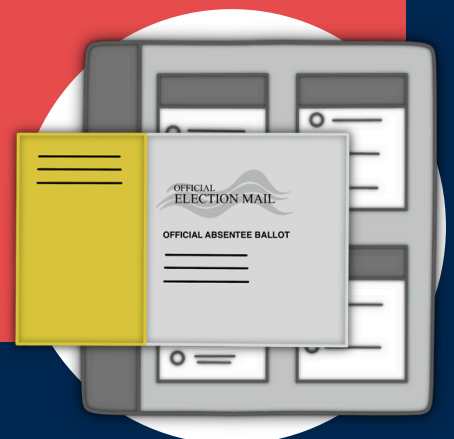
Georgia voters have three weeks before Election Day for early voting. You can vote at any early voting location in your county. Check your County Elections Office to see when early voting begins.

Absentee Voting

Absentee voting is a way for you to cast a ballot in an election without voting in-person at a polling place.

Your request for an absentee ballot must be made at least 11 days before the election. After completing your absentee ballot, you can send it by mail in the pre-addressed envelope (add postage) OR place it in a ballot drop box.

Check your County Elections Office to find available drop box locations closest to you.



CAST YOUR BALLOT

Election Day Voting

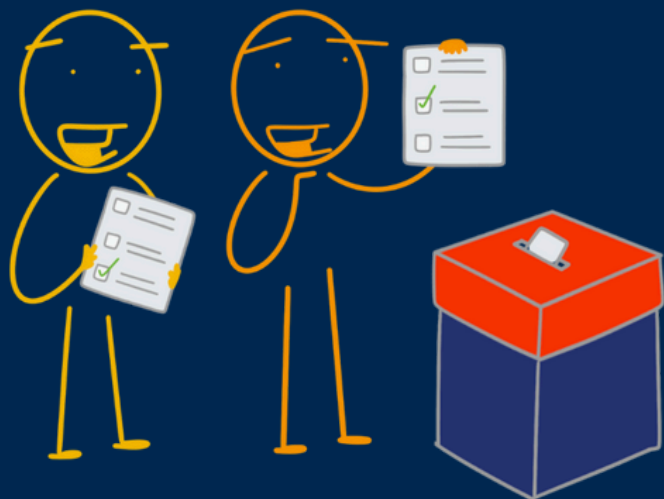
You can vote in person on Election Day from 7 am until 7pm at your assigned polling place. If you are in line by 7pm you will still be allowed to vote. All polling places are to be fully accessible and there should be poll workers to assist as needed.

You will need to bring a government issued photo ID to verify your identity.

Need assistance?
Call the Georgia
Advocacy Office
Voter Hotline!



1-800-537-2329



VOTING RESOURCES

Visit the Secretary of State's [My Voter Page Website](#).

- Register to vote
- Check your registration status
- Find your voting precinct
- Check your provisional ballot status
- Check your absentee ballot status
- Voting FAQs

The screenshot displays the 'MVP My Voter Page' website. At the top, there is a navigation bar with icons for SOS Office, Business, Charities, Elections, Securities, Licensing, and Search. Below this is a green banner with the text 'Welcome To GA My Voter Page'. The main content area is divided into two sections. On the left is a registration form with the following fields: 'First Initial' and 'Last Name' (both marked as required), 'County' (a dropdown menu), and 'Date of Birth' (a date input field). A 'SUBMIT' button is located below the form. Below the button, there is a link: 'Not Registered to Vote? Register'. On the right is a section titled 'Use the GA MVP Log In to check your' followed by a list of services: 1. Voter registration status, 2. Mail-In application and ballot status, 3. Poll location, 4. Early voting locations, 5. Elected Officials, 6. Registration information on file with the county office, 7. Sample ballot for the upcoming election, and 8. Provisional Ballot status.

VOTING RESOURCES



The [Georgia Voter Guide](#) is a non-partisan, non-profit, 501(c)(3) organization dedicated to voter education.



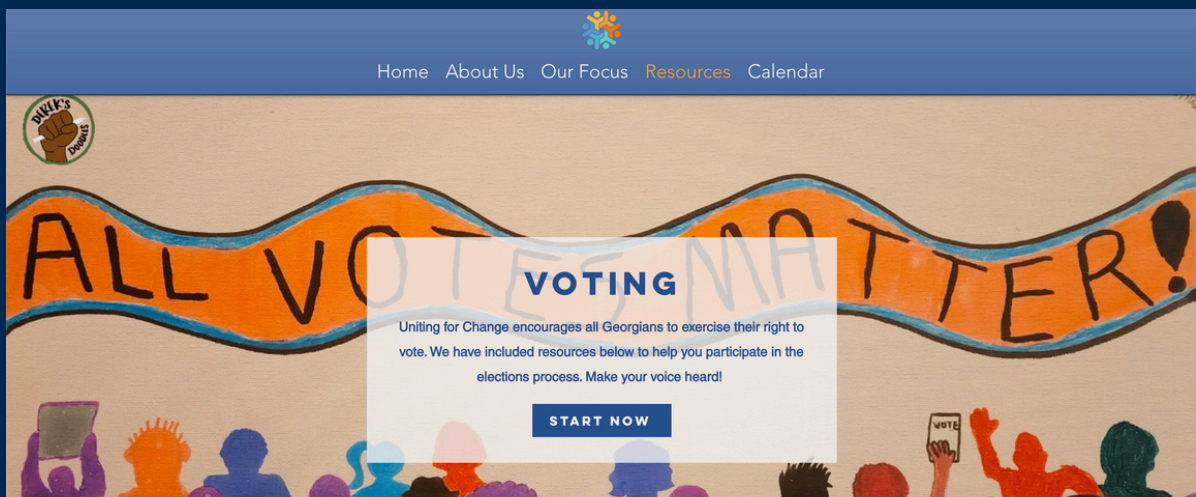
[Branch Politics](#) is a non-partisan organization that helps people prepare to vote and includes information on sample ballots.

VOTING RESOURCES

BALLOT PEDIA

The Encyclopedia of American Politics

Ballotpedia is a nonpartisan organization that provides information about federal, state, and local politics, government, and elections.



Visit the Uniting for Change website and our Voting Google Drive for more helpful links, slides, graphics and other information on voting.

VOTING

FACTS & FAQs

Who is eligible to vote?

- You have to be 18 years old by election day, a US citizen and a resident of the county where you will vote.
- You are not eligible to vote if you are servicing a sentence for a conviction of a felony or if a judge has said you can't vote in a legal guardianship order.
- If you do have a legal guardian it doesn't automatically mean you can't vote UNLESS the judge wrote that in the guardianship order.



VOTING FACTS & FAQs

What do I need to register to vote online?

- a valid driver's license or
- identification card issued by the [Georgia Department of Driver Services](#).

Who can help me register to vote?

- Whether you register to vote online or fill out a voter-registration application, you can receive assistance to complete it. The person providing assistance must sign the oath next to your signature.

Who can fill out a ballot on my behalf?

- Relative (does not have to live in same household)
- Someone who lives in the same household
- A "caretaker" (supporter) of a voter with disabilities

VOTING

FACTS & FAQs

When is early voting?

- You can see the early voting locations in your county and your assigned Election Day polling place on [My Voter Page](#).
- During early voting, you can vote in any of your county's early voting sites. If one has a line, find another with a shorter line.

Where do I vote on Election Day?

- To find your assigned Election Day polling place, please visit [My Voter Page](#).
- On Election Day, you must vote in your assigned precinct.

VOTING

FACTS & FAQs

How do I apply for an absentee ballot?

- You will need to fill out an [Absentee Ballot Application](#), which can be found on the Secretary of State's website. Then you will need to mail, fax, email (as an attachment), or drop the application off at your county registrar's office.

When is the deadline for returning my absentee ballot?

- A ballot must be received by the county registrar no later than the close of polls on Election Day. Delivery can be either U.S. first class mail or hand delivered by the voter. Ballots received after the polls close cannot be counted.

Can I return my absentee ballot to a drop box in any county?

- **No.** You must return your ballot to a drop box in the county where you are registered to vote. Returning it to another county's drop box could result in your vote being rejected.

VOTING

FACTS & FAQs

What do I need to provide for absentee ballot?

You must include the number from your driver's license. If you do not have one, include the number from your state-issued identification card, which you can get for free at any office of the Department of Driver Services or your county voter registration office. However, if you have neither a driver's license nor a state ID card, then provide a copy or photo of one of the following:

- United States Passport
- Georgia voter identification card
- Other valid photo identification card issued by a branch, department, agency, or entity of the State of Georgia, any other state, or the United States authorized by law to issue personal identification
- United States military identification card
- Employee identification card issued by any branch, department, agency, or entity of the United States government, Georgia state government, or Georgia county, municipality, board, authority, or any other entity of the state of Georgia
- Tribal identification card

OR

Any of the following documents that show your name and address:

- Current utility bill
- Bank statement
- Paycheck
- Government check
- Other government document

VOTING FACTS & FAQs

What is a provisional ballot?

- A provisional ballot is a paper ballot used by a voter when their eligibility to vote cannot be determined at the polling place. Voters who declare they are registered and eligible to vote in the county in which they desire to vote, but whose names do not appear on the registration list, must be permitted to cast a provisional ballot. If you have a good faith belief you are properly registered in your county, you have the right to vote a provisional ballot. The provisional ballot will count if your eligibility can be determined within three days after Election Day by your County Registrar's office.

**Need assistance? Call the
Georgia Advocacy Office Voter
Hotline!**



1-800-537-2329



VOTING

FACTS & FAQs

What form(s) of ID do I need to vote in person?

- Any valid state or federal government-issued photo ID, including a free ID card issued by your county registrar's office or the [Georgia Department of Driver Services](#).
- Student ID from a [Georgia public College or University](#)
- Valid employee photo ID from any branch, department, agency, or entity of the U.S. Government, Georgia, or any county, municipality, board, authority or other entity of this state
- Valid U.S. passport ID
- Valid U.S. military photo ID containing a photograph of the voter
- Valid tribal photo ID containing a photograph of the voter

***You must bring one of these forms of identification to vote in person. If you do not have photo identification when you go to vote, you will be allowed to vote a provisional ballot which you must cure. You will be required to cure it by providing proper photo identification to the registrar within three days after Election Day for your ballot to count.

VOTING

FACTS & FAQs

What if I do not have any of the six valid forms of identification?

If you do not have one of the six acceptable forms of photo ID, the State of Georgia offers a free ID card. An ID card can be issued at any county registrar's office or Department of Driver Services Office, free of charge.

To receive a voter identification card, the voter must provide:

- A photo identity document or approved non-photo identity document that includes full legal name and date of birth
- Documentation showing the voter's date of birth
- Evidence that the applicant is a registered voter in the State of Georgia
- Documentation showing the applicant's name and residential address

A Georgia voter identification card shall remain valid so long as a person resides in the same county and remains qualified to vote.

VOTING FACTS & FAQs

What accessibility accommodations are available to voters with disabilities?

- Georgia law requires that your county provide polling places that are accessible to people with disabilities.
- Any voter who is 75 years of age or older, or who has a disability and requires assistance in voting, may vote immediately at the next available voting compartment or booth without having to wait in line.
- The voting system is available with a range of accessibility devices that voters can use to navigate through the ballot and make their selections— a hand-held controller called the Audio Tactile Interface (ATI), sip and puff device, or paddle device.

VOTING FACTS & FAQs

What accessibility accommodations are available to voters with disabilities?

- You can get help voting if you are unable to sign your name, unable to see or mark the ballot, operate the voting equipment, or enter the voting booth without assistance. When you arrive, you must give the poll worker the name of the person assisting you or write it on your voter certificate.
- You can choose anyone to help you except:
 - your employer or agent of your employer,
 - an officer or agent of your union
 - anyone whose name appears on the ballot as a candidate
 - Someone related to the candidate

Learn more about accommodations for voters with disabilities at the Secretary of State's website!

**VOTE AS IF
YOUR LIFE
DEPENDS
ON IT...
BECAUSE IT
DOES.**

-JUSTIN DART

This project was supported, in part by grant number 2001GASCDD-03, from the U.S. Administration for Community Living, Department of Health and Human Services, Washington, D.C. 20201. Grantees undertaking projects with government sponsorship are encouraged to express freely their findings and conclusions. Points of view or opinions do not, therefore, necessarily represent official ACL policy.



Sangha Unity Network, Inc.

 770.849.8716

 sanghaunitynetwork.org

 info@sanghaunitynetwork.org